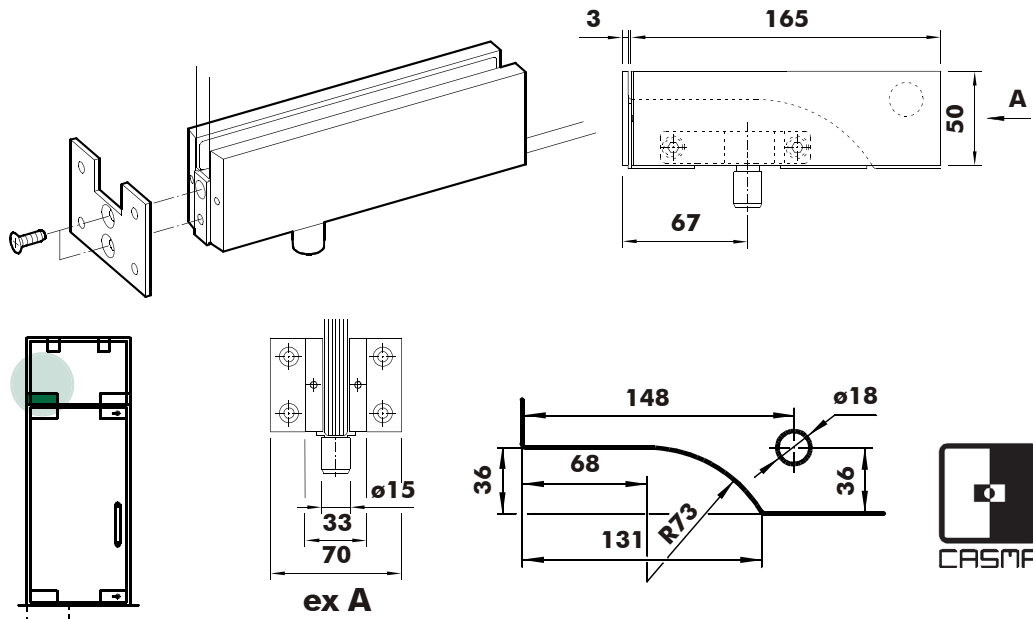


# COMPONENT SPECIFICATION SHEET

## CASMA Top Patch Fitting - 43410



Also available from DORMA & CRL.

### FUNCTION

- Center Hung Pivot
- Left or Right Doors
- Double Acting
- Transom Mtd. Pivot
- Solid Aluminum Body

### STOCK FINISHES

- Brush Stainless Steel
- Polish Stainless Steel
- Clear Anodized

### AVAILABLE FINISHES

- Polished Brass
- Dark Bronze Anodized

### CUSTOM FINISHES

- Paint
- Powder Coating
- Custom Anodized